



Stucchi.
The power of innovation.

Series 7100

New holders for LED modules

PHILIPS FORTIMO TWISTABLE INTEGRATED LLE

ZHAGA is a consortium of companies in the lighting field which aims to ensure standardization of LED Light Engine interfaces.

The interfaces that have been individuated for standardization purpose are:

1. **Mechanical interface**
2. **Electrical interface**
3. **Optical interface**
4. **Thermal interface**

In the **ZHAGA** consortium are present all the main worldwide manufacturers of light sources, luminaires and components in LED field.

A.A.G. STUCCHI is a member of **ZHAGA** consortium (www.zhagastandard.org) since its foundation and on 16th February was elected to the Steering Committee which now includes 15 companies (A.A.G. STUCCHI, COOPER, G.E., IGUZZINI, LG INNOTEK, OSRAM, PANASONIC, PHILIPS, REGENT, SAMSUNG, SCHREDER, SITECO, TOSHIBA, TRILUX, ZUMTOBEL).

Philips Fortimo Twistable Integrated LLE LED modules

The **PHILIPS FORTIMO TWISTABLE INTEGRATED LLE** LED modules with **PHJ65** (1100 lm) and **PHJ85** (2000 lm) bases are ideally suited for use in downlight applications where halogen lamps and CFLs are traditionally used. The complete system, made of Philips Twistable LED module with the integrated driver and the holder, delivers energy-efficient, low-maintenance and high-quality lighting solution.

The LED modules can be easily replaced with the latest upgrades at the end of their life or, even before to get a different color temperature to obtain a change of ambience, with no need to remove the reflector or open the ceiling.

BENEFITS:

- Easy to install and upgrade thanks to the integrated driver
- Round module allows miniaturization
- Improved “Total Cost of Ownership” (TCO)
- Dimming with commonly used trailing edge* dimmers on the market
- Saving up to 60% energy compared to the present halogen solutions
- The average lifetime of 25,000 hours (with 70% of lumen) significantly reduces the need for maintenance.

*type of dimmer wich allows dimming without any buzzing from the components even in the most critical conditions.

Philips Fortimo Twistable Integrated LLE LED modules

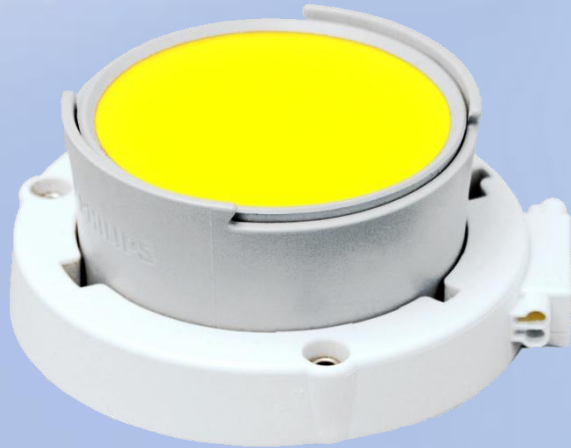
APPLICATIONS:

In downlight applications where halogen lamps and CFLs are traditionally used:

- Hospitality and cruise ships in corridors, service areas, lobbies, lounges, restaurants
- Retail in corridors, changing rooms
- Healthcare in corridors, reception areas, waiting rooms



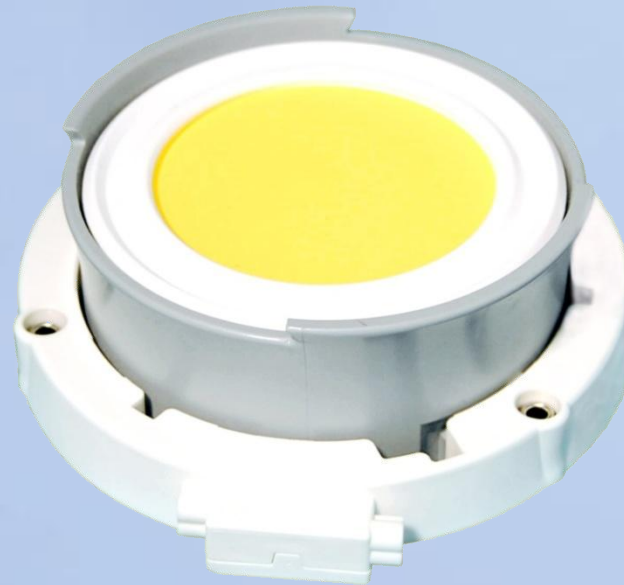
Philips Fortimo Twistable Integrated LLE LED modules



1100 lm - PHJ65

PHJ65d-1 (100-127V AC) JAP/USA version

PHJ65d-2 (200-277V AC) EU/USA version



2000 lm - PHJ85

PHJ85d-1 (100-127V AC) JAP/USA version

PHJ85d-2 (200-277V AC) EU/USA version

A.A.G. STUCCHI holders series 7100 for LED modules

The new holders series **7100** for **PHILIPS FORTIMO TWISTABLE INTEGRATED LLE** LED modules are ingeniously designed so as to allow easy, positive insertion of the LED modules with only one moving part, the floating contacts and spring-rivet system ensures a positive contact to the TIM (Thermal Interface Material) to guarantee good air flow to provide effective heat dissipation.

The reduced overall dimensions and design give to the holders series **7100** a slim and modern line.

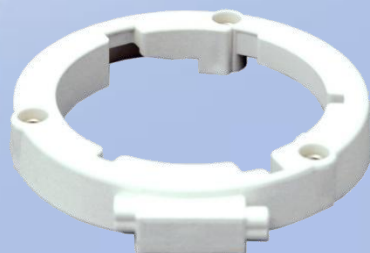
The fixing is very quick and easy thanks to the “spring-rivets” system fully integrated into the holder body (single parts cannot be lost) and to the use of standard M3 screws.

MAIN FEATURES:

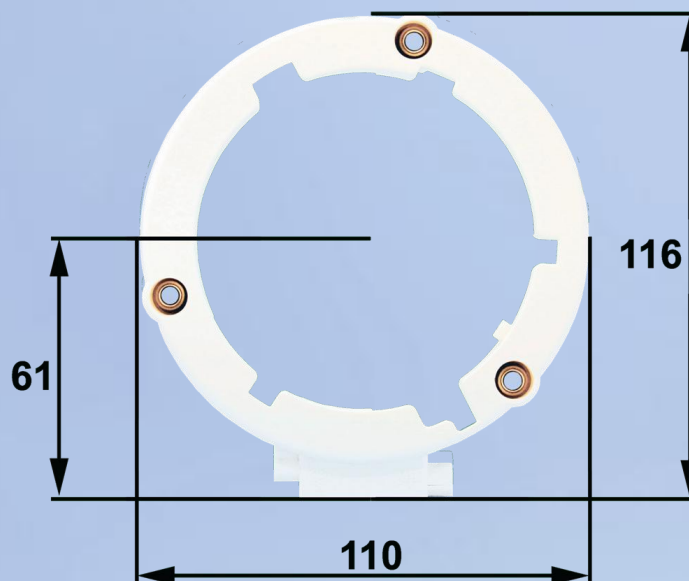
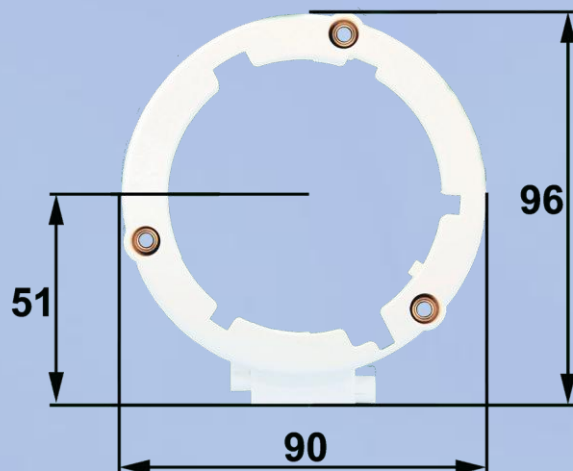
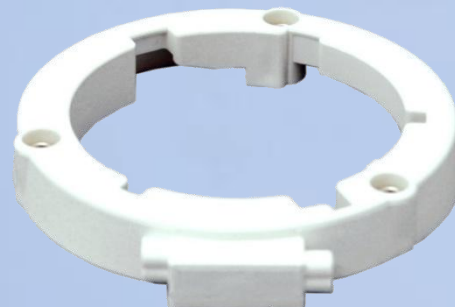
- Reduced overall dimensions and “eye-catching” design
- Floating contacts
- Only one moving part
- Spring-rivet system
- Fixing with M3 standard screws
- Push-wire terminals with 2 holes
- Made in Italy

Reduced overall dimensions and “eye-catching” design

7100/... (PHJ65)

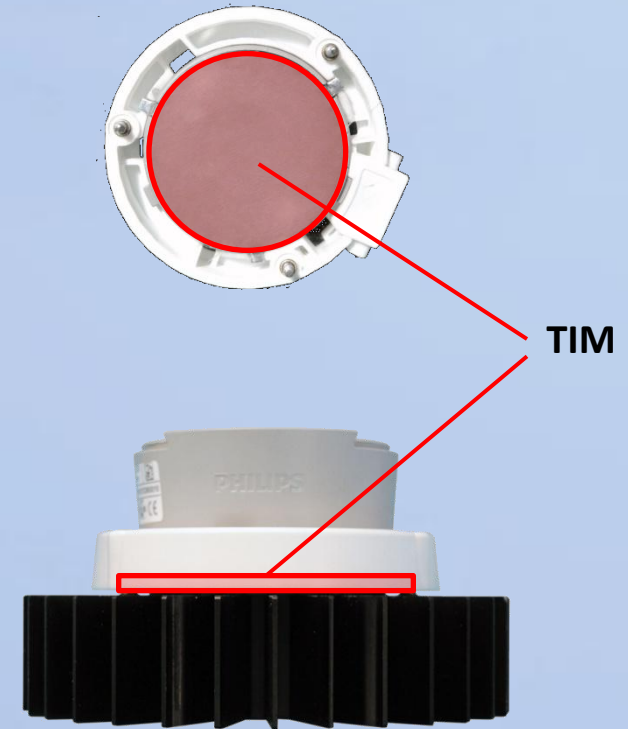
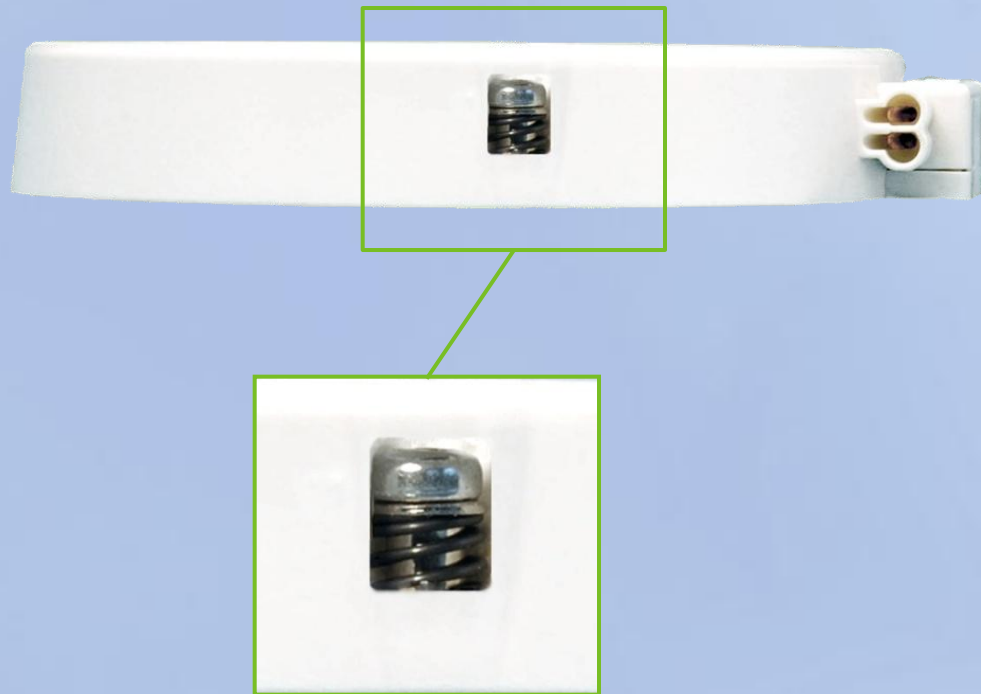


7101/... (PHJ85)



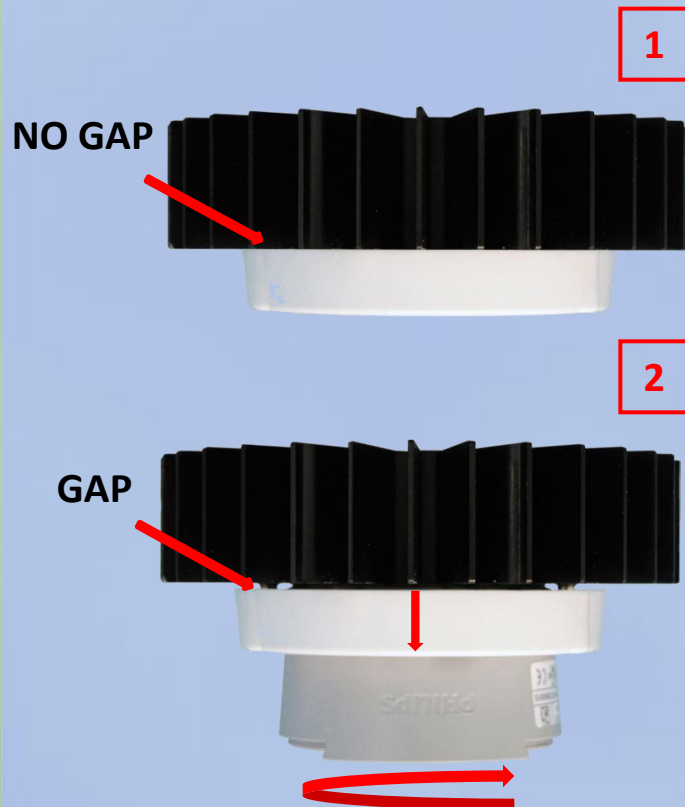
Spring-rivet system

The spring-rivet system assures an homogeneous and constant pressure time running of the Thermal Interface Material (TIM) onto the heat sink for effective heat dissipation.



Floating contacts and body with only one moving part

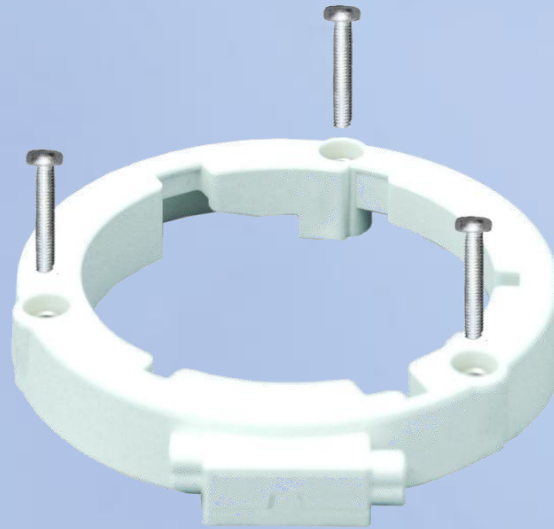
During the LED module insertion the holder raises from the heat sink making the air flow easier and providing a more effective heat dissipation; moreover the holder does not work in direct contact with the heat sink. The holder is designed with floating contacts which prevent any mechanical solicitation of the module contacts (PCB) even in case of TIM compression or deterioration during the whole LED module lifetime. The body with one only moving parting gives more solidity and stability to the whole system.



Increased air flow between the holder and the heat sink for more effective heat dissipation

Fixing with M3 standard screws

The holder fixing to the heat sink is very quick and easy thanks to the spring-rivet system fully integrated into the holder body (single parts cannot be lost) and to the use of standard M3 screws (minimum length 16 mm) which are very easy to find in the market.



Push-wire terminals with 2 holes

Push-wire terminals with 2 holes feature allow to wire more LED modules one another (looping connection).

