

132/V

132/A

GANCI

CLIPS

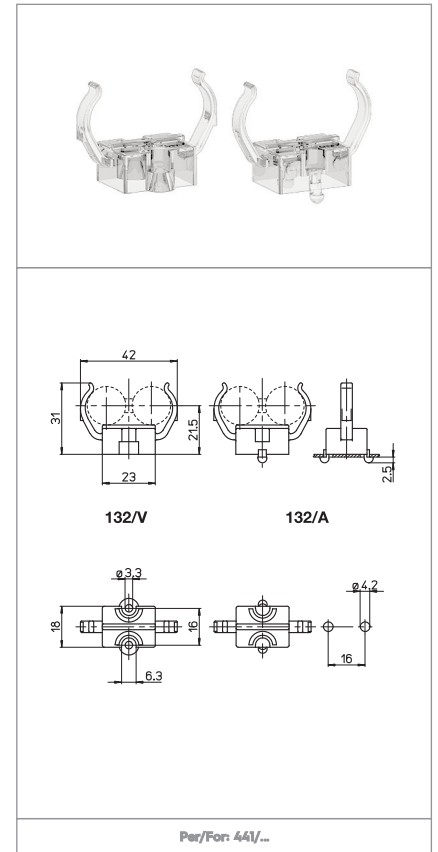
Dati tecnici



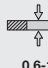
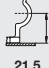

Technical data

Caratteristiche

Characteristics

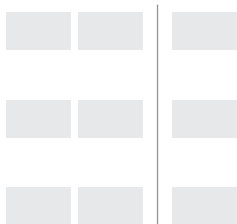
in policarbonato trasparente
in transparent polycarbonate



 132/V	fissaggio con vite <i>screw fixing</i>	 132/A	fissaggio ad innesto <i>push-in fixing</i>	 0,6-1	spessore lamiera di fissaggio <i>fixing metal plate thickness</i>	 21,5	altezza centro lampada (da sopra la lamiera) <i>lamp centre height (from the top of the metal plate)</i>
 S-1132/2							

Marchi di qualità

Quality marks



Direttive Europee

European directives

Conforme "RoHS"
"RoHS" compliant
Non soggetto alla "RAEE"
Not subject to "WEEE"

Pesi e confezioni

Weights and packaging

Art. Codice prodotti <i>Product references</i>	g Peso netto <i>Net weight</i>	n° pz per sacco per bag	n° pz per scatola per box	n° pz per cartone per carton
132/V	2,7	1000	200	
132/A	2,5	1000	200	

Note

Notes